

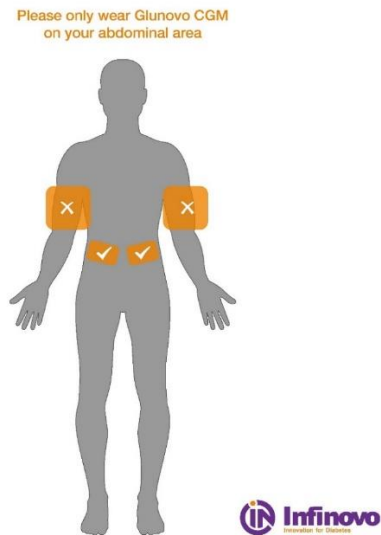
Wearing Position of Infinovo Device Notice 关于佩戴位置和使用注意事项的提醒

Dear Valued Customer,
尊敬的顾客，

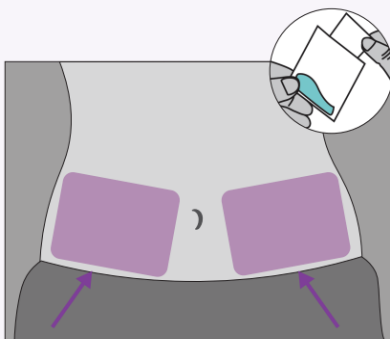
We would like to express our heartfelt gratitude for your unwavering support and trust in Infinovo.
我们谨对您对 **Infinovo** 的持续支持表示最深的感谢。

As part of our dedication to providing premium-quality products, we consistently strive to ensure the accuracy and reliability of our offerings. Thus, we'd like to inform you of a crucial update regarding the recommended wearing position of Infinovo's device.

作为我们承诺提供高质量产品的一部分，我们始终努力确保产品的准确性和可靠性。因此，我们想告知您关于 **Infinovo** 设备推荐的佩戴位置的重要更新。



*请仅在腹部区域佩戴 **Glunovo CGM**



Choose a sensor placement site on the abdomen

Clean the site with alcohol wipes and let the area dry completely

- 5 cm away from the belly button
- 5 cm away from the insulin injection site
- Avoid fatty clotting site, tattoos, scars
- Shave the spot if it's hairy

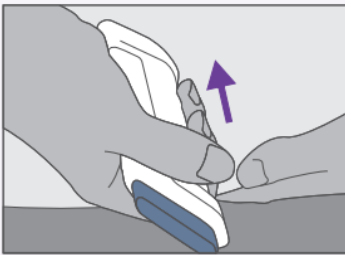
Do not use if the package is damaged or expired!

选择腹部的传感器佩戴位置

用酒精湿巾清洁该部位并让该区域完全干燥

- 距离肚脐 5 厘米
- 距胰岛素注射部位 5 厘米
- 避免脂肪硬块堆积较多以及纹身、疤痕的部位
- 如果该部位有毛，请在该区域进行剃毛操作

3. Place the Sensor

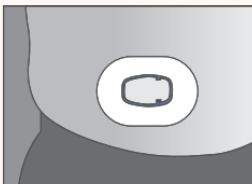


Place the sensor horizontally on your abdomen, and press the applicator **firmly** against your skin

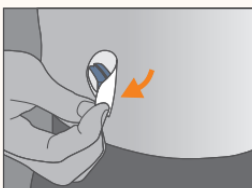
Insert Sensor

- 在植入产品时贴紧腹部

1. Remove Sensor & Transmitter



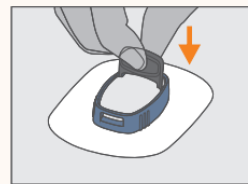
Remove sensor and transmitter **together** off your skin.



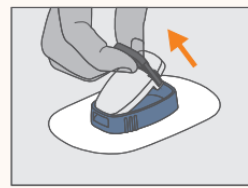
Gently lift the edge of the adhesive tape from your skin, and remove the sensor from one side to the other

Remove Sensor


2. Remove Transmitter



Take a releaser and pin it into the sensor as shown above



Then pull it out to remove the transmitter from sensor.

 Transmitter is reusable.
Please keep it carefully.

Remove Sensor

- 从身体上移除设备时请不要移除发射器后再移除传感器，从身体移除设备后再取出发射器

After rigorous research and stringent testing, as detailed in the Infinovo User Manual (IFU), we confirm that the optimal wearing position for our device is strictly on the abdomen. This location ensures the highest

efficiency and comfort.

经过严格的研究和测试，如 **Infinovo** 用户手册(IFU)所述，我们确认我们的设备最佳的佩戴位置是腹部。该位置确保了最高的效率和舒适性。

Regrettably, the suitability of the arm as a wearing position is still under verification. As such, we currently advise against wearing the device on the arm for your safety. Infinovo reserves the right not to address complaints caused by wearing [the product] outside the abdominal area. Wearing it in positions not recommended by the instruction manual may pose unknown risks.

很遗憾，手臂作为佩戴位置的适用性仍在验证中。为了您的安全，我们目前建议您不要在手臂上佩戴设备。**Infinovo** 将有权不处理由于非腹部佩戴引起的投诉，不按照说明书推荐的位置可能带来未知的风险。

Rest assured, we are consistently researching advancements in wearable technology and may offer revised guidelines in the future. We promise to keep you updated with any pertinent developments. 请放心，我们始终在研究穿戴技术的进步，并可能在未来提供修订的指南。我们承诺会及时通知您任何相关的更新。

We deeply appreciate your trust in Infinovo. Our priority is, and always will be, the satisfaction and well-being of our esteemed customers. Should you have any questions or concerns, our dedicated customer service team is always ready to assist.

我们深深感谢您对 **Infinovo** 的信任。我们的首要任务是确保我们尊贵的客户的满意度和福利。如有任何疑问或关心，我们的客户服务团队随时准备提供帮助。

Thank you for your kind understanding and ongoing support. Infinovo will organize the meeting if needed. 感谢您的理解和持续支持。

Infinovo Medical Co., Ltd.
Issued date (YYYY-MM-DD): 2023-09-04



-END-